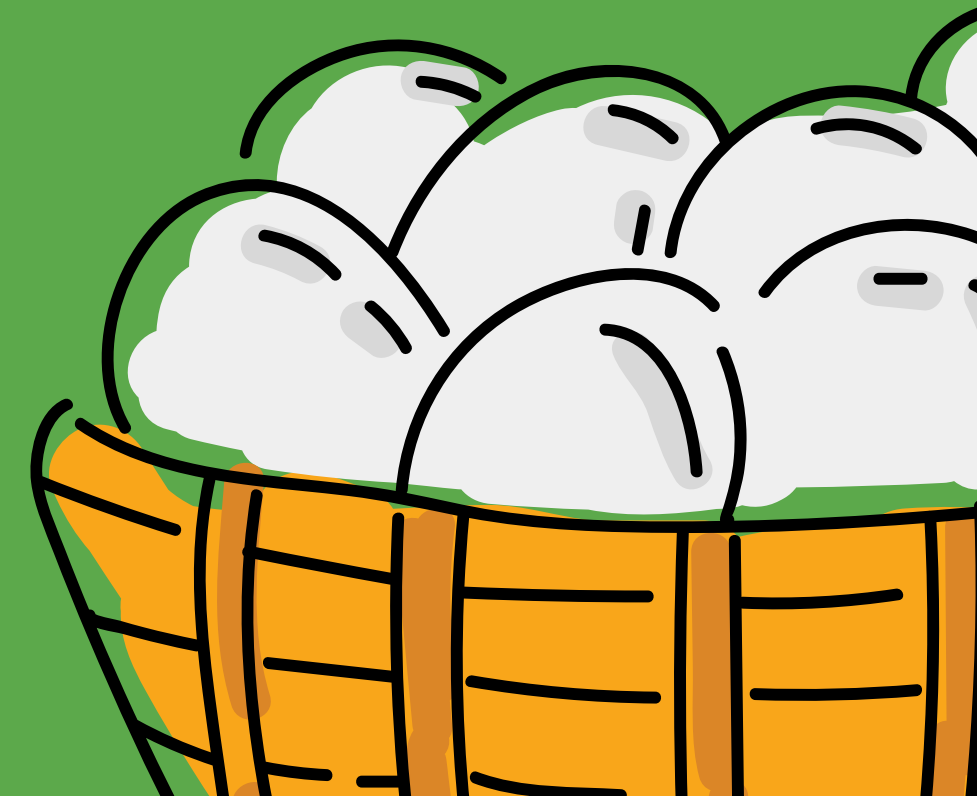
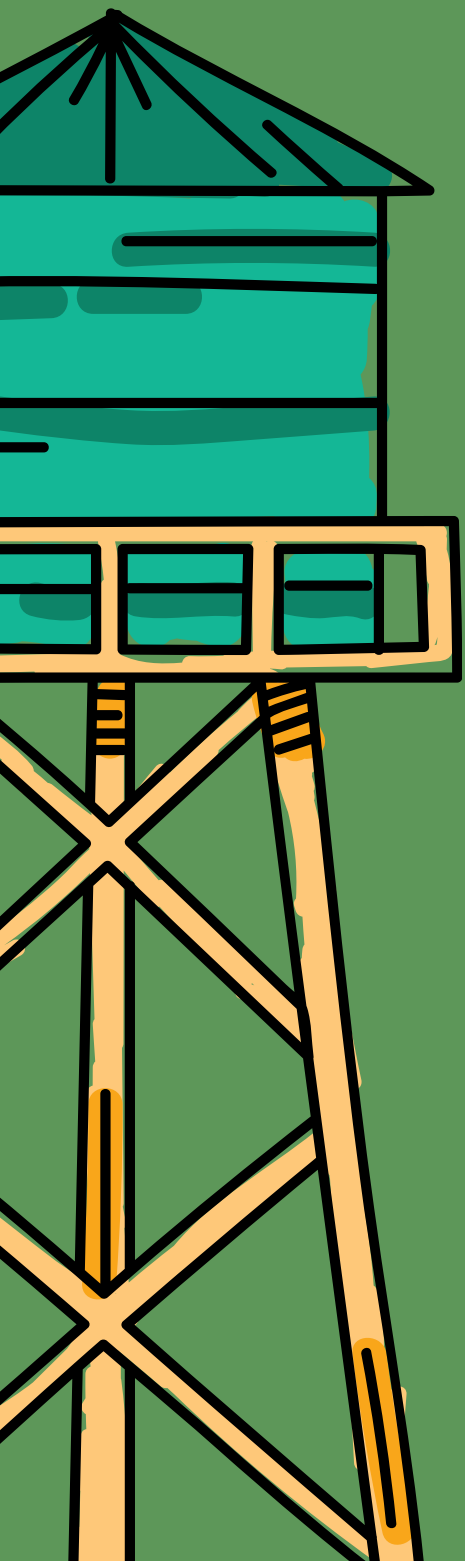


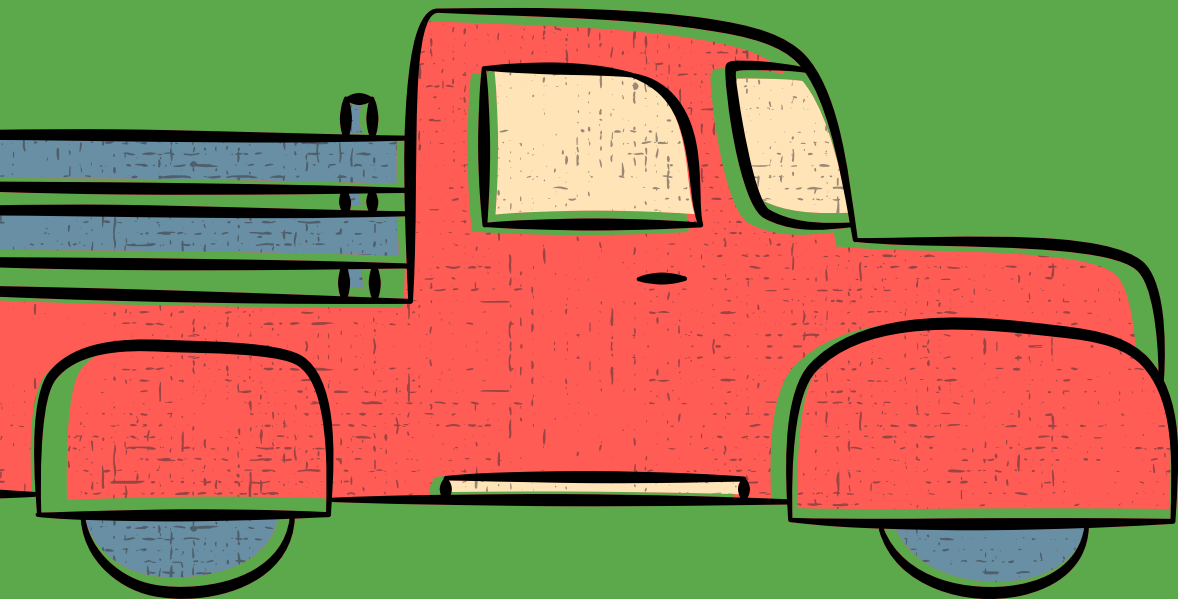
FARMER-LED RESEARCH PROGRAM



What is Farmer Led Research?

Farmer Led Research (or FLR) refers to a kind of agricultural research where farmers and growers take a central and decision-making role in guiding research priorities, methodologies, and outcomes.

Unlike traditional research models where scientists or institutions primarily drive the agenda, this approach emphasizes the knowledge, experience, and needs of farmers and growers as the foundation for research.

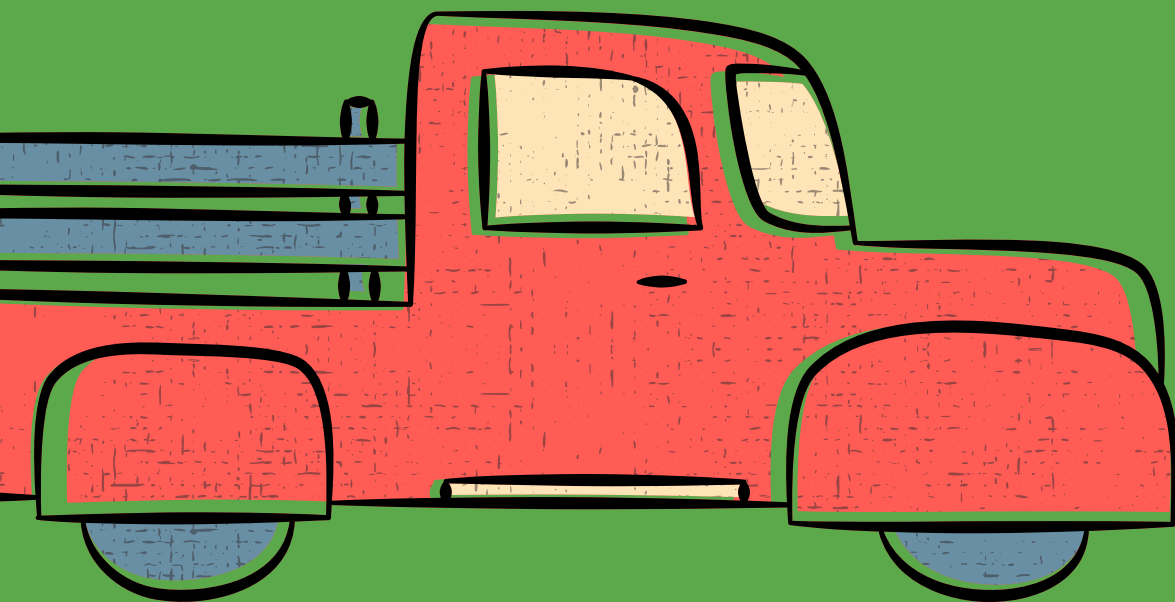


What is Farmer Led Research?

Instead of scientists designing studies and farmers simply providing land or labour, farmers/growers lead the process.

- Farmers/growers identify the problem.
- Farmers/growers design the test.
- Farmers/growers get the results.

Ex: "Why do my carrots crack in cold soil?"





Why it matters

FLR is a method that gives farmers the tools to collect and analyze data for their own agricultural operations while working alongside researchers. In this approach, farmers and scientists collaborate closely at every stage, from planning the project to interpreting the results, ensuring that the diverse needs of farmers are met.

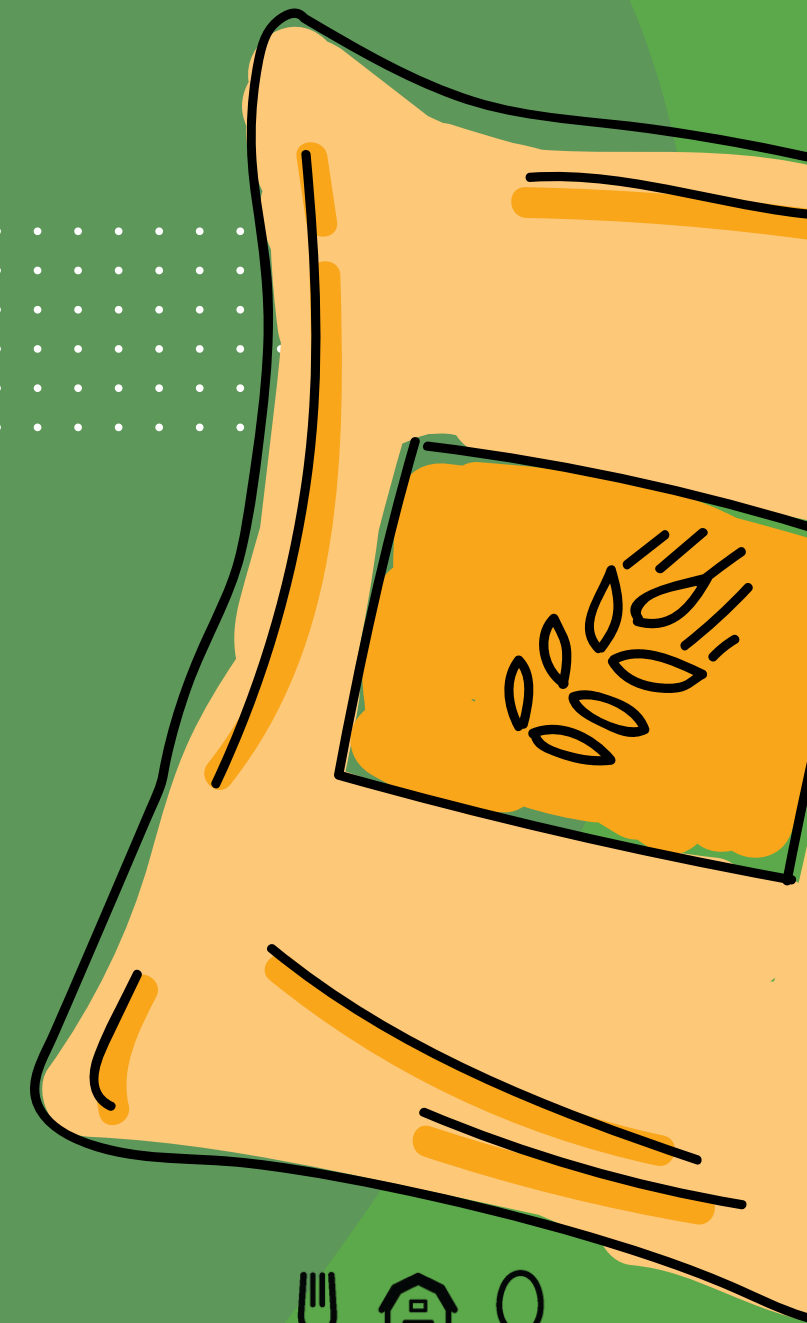
While most farming research happens in southern Canada, the TAA's FLR program ensures northern challenges get studied.



How this will work in the NWT

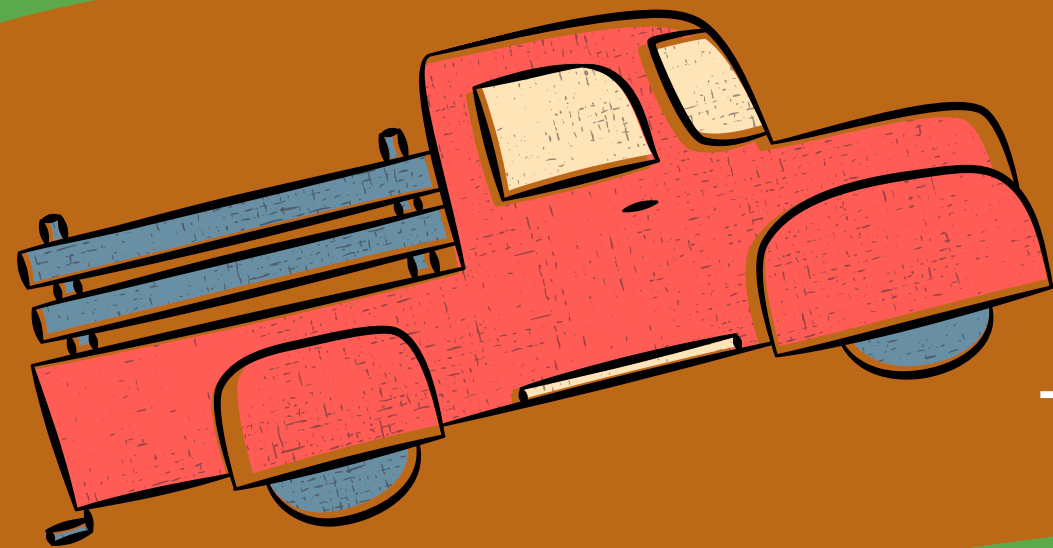
The TAA's FLR program will focus on addressing the unique food production challenges and opportunities in the NWT.

It will emphasize collaboration to develop sustainable, culturally relevant, and climate-resilient farming practices suited to the region's environment and the sharing of knowledge across the growing community.



This is a 5 year project

Developing a Farmer Led Research program takes time and intention.



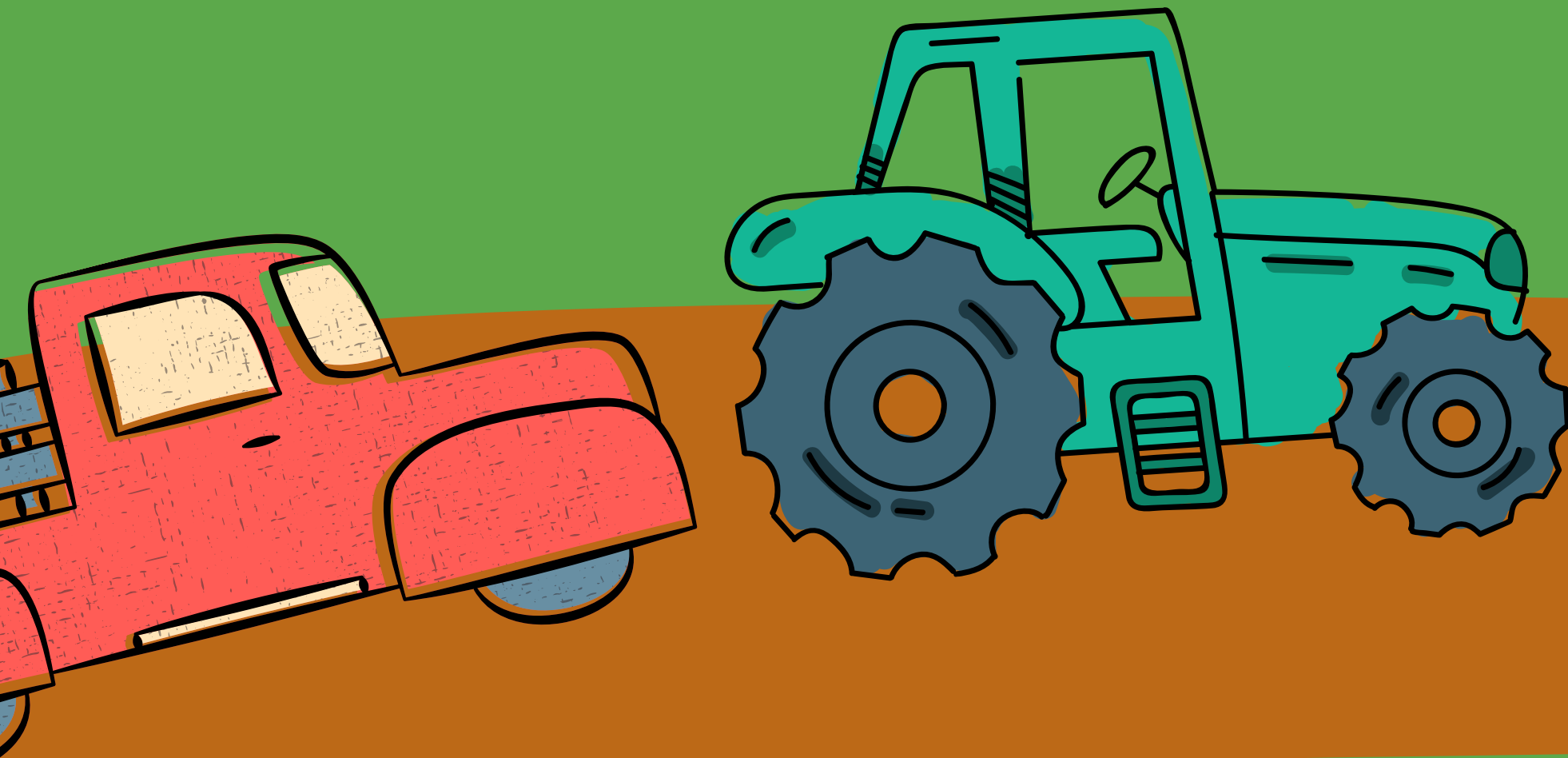
The TAA FLR project is being built with support from the Future Harvest Partnership and a team of experts from across Canada and the US who have already travelled the road of setting up a successful FLR program. It will be built with input from NWT farmers and growers and sector experts. It will be informed by past NWT farm research.

What is happening in year 1

In 2025, the TAA team will develop program policies and procedures and begin the consultative process for establishing a uniquely NWT FLR program.

We will work with a small group of initial farmer researchers from various regions as a pilot project to practise identifying projects and establishing protocols. This group has already been identified.

This first cohort of farmer researchers will then document and share the results of their research and their experience so that we can fine tune the project for a full roll out in 2026.



How does the research process work?

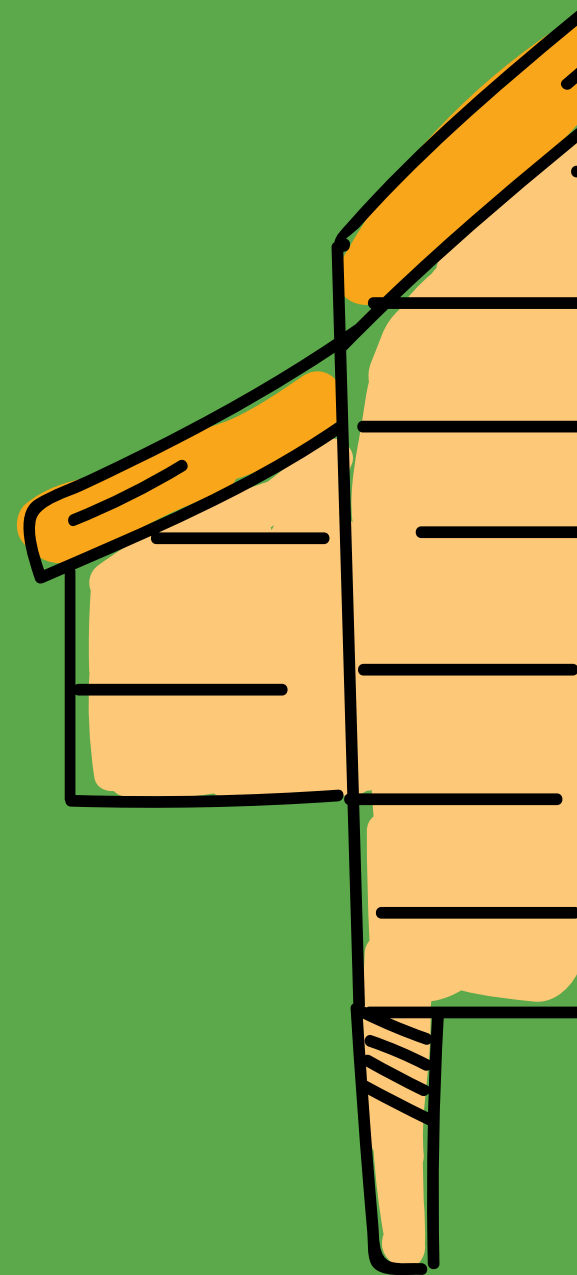
Step 1: FARMER/GROWER IDENTIFIES A RESEARCH INTEREST

Step 2: FARMER/GROWER WORKS WITH TAA RESEARCH TEAM TO DESIGN THEIR EXPERIMENT

Step 3: FARMER/GROWER BEGINS THEIR TRIAL

Step 4: FARMER/GROWER MONITORS AND COLLECTS DATA THROUGHOUT THE SEASON

Step 5: TAA RESEARCH TEAM WORKS WITH FARMER/GROWER TO ANALYZE THE DATA AND DEVELOP KNOWLEDGE SHARING RESOURCES





Where does the research take place?

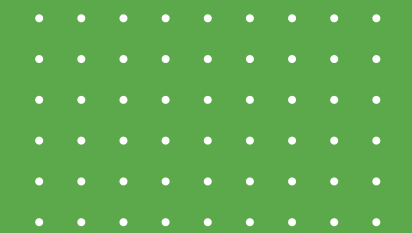
Research is conducted on existing NWT farms or market gardens or in community settings like community gardens and greenhouses, ensuring practical relevance and direct benefits to local food systems. Emphasis on traditional Indigenous knowledge and practices, such as land stewardship and local food systems, is integrated into the research.

A stylized illustration on the left side of the page. At the top, a wooden crate with orange and green horizontal stripes contains a yellow ear of corn. Below the crate, two purple onions with green stalks are shown. In the foreground, there are large, light blue leaves with dark blue veins. The background is a solid green color with a white circular graphic element behind the text.

What's in for the farmer/grower?

Through the TAA FLR program, farmers are able to identify and research topics of interest/need to them, they receive training and ongoing mentorship to design and execute research projects and they have the opportunity to share their research results within the NWT agrifood community and with new entrants into the sector. A small financial stipend covers their research costs and some of their time.

The Future of Farming



The program may also contribute to policy development by providing evidence-based recommendations to support northern agriculture and food security initiatives.



Two Eyes on the Land: Farmers and Researchers Learning Together.

To join the Farmer/Grower Network and
get advance notice of FLR opportunities,
email your name, location and crops you
typically grow to
research@nwtagrifood.ca

